

SEMBACH
AIR BASE
GERMANY



Welcomes You

38th TMWG PAMPHLET
NO. 190-1-1

HEADQUARTERS, 38TH TACTICAL MISSILE WING
APO 130, US Forces
15 August 1963

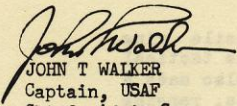
Information Activities

SEMBACH AIR BASE GUIDE

PURPOSE: This pamphlet is prepared to inform newly assigned personnel about Sembach Air Base and surrounding community.

OFFICIAL:

OTTO R HANEY
Colonel, USAF
Commander


JOHN T WALKER
Captain, USAF
Chief, Admin Svcs

This pamphlet supersedes 38TMWG Pamphlet 190-1-1, 15 May 1962.

OPR: OI

DISTRIBUTION: X (Air Force Bases in United States)

SEMBACH AIR BASE GUIDE

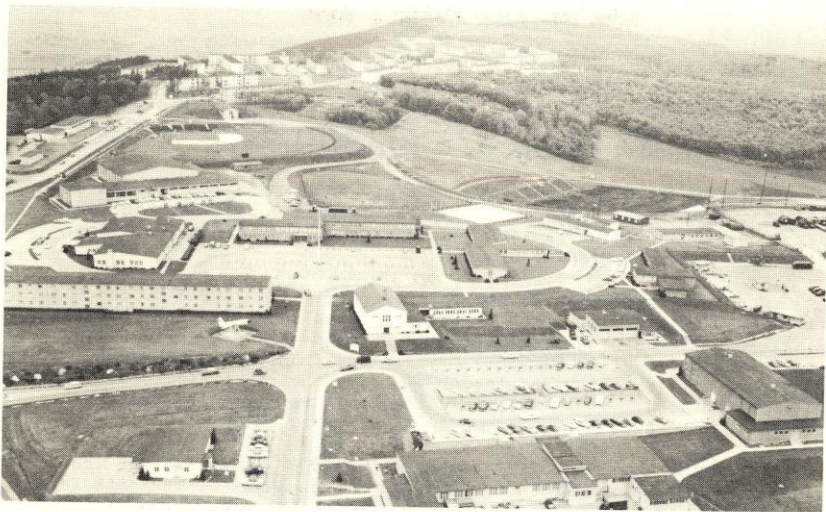
It is my pleasure to welcome you on your assignment to the 38th Tactical Missile Wing and to Germany.

We are the first operational missile wing in the Air Force, and the only Air Force tactical missile wing in Europe. We have also made a reputation of being first in many areas, ranging from mission readiness and safety, to sports.

Whether you are in operations, materiel or support activities, how well you do your job directly affects the entire Wing. I know you will carry on the traditions of the Wing proudly.

May your tour be pleasant, productive, and the best in your Air Force career.

Commander
Sembach Air Base



THE AERIAL VIEW OF SEMBACH SHOWS THE ADMINISTRATIVE AND HOUSING AREA

SEMBACH AIR BASE

Sembach Air Base is unique in many respects. It is the U.S. Air Force's first operational tactical missile base and home of the NATO committed 38th Tactical Missile Wing.

The site where the base is located has a history that goes back to the days following World War I; French occupation forces were based here from 1919 to 1930.

In 1941 the German Air Force, in search of suitable air field sites, remembered that the French had once reserved the land for an airstrip. They marked out the boundaries and planted sod but never used it because of the German Army's rapid advance into France.

On June 15, 1951, the French Military Administration (Allied High Commission) returned, requisitioned the land that they once occupied, plus a larger surrounding area and started construction of a modern air base.

A work schedule involving 1,200 laborers working 24-hours each day and under lights during darkness, enabled the French to complete the base in seven months. After the construction was completed, the French government turned the property over to the U.S. Air Force. When additional construction required by the USAF was completed in 1953, the first contingent of Americans moved in.

The some 852 acres of land comprising Sembach Air Base are split into two distinct areas: The administration and adjoining family housing areas are separated by a mile of road from the flight line and operations area.

38th TACTICAL MISSILE WING

The birth of the 38th Tactical Missile Wing can be traced back to 1954 when the 71st Tactical Missile Squadron, known then as the 1st Pilotless Bomber Squadron, arrived in Germany to become the first U.S. Air Force Tactical Missile unit in Europe. It was later joined by its sister unit, the 69th Pilotless Bomber Squadron.

Within a year the squadrons were given the more appropriate designations of the 1st and 69th Tactical Missile Squadrons. In February 1956, these two units were renamed again; they became the 71st and 495th Tactical Missile Squadrons.

Men from these missile units later formed the 7382nd Guided Missile Group (Tactical), which evolved into the 701st Tactical Missile Wing. The 7382nd group, while in its formative stages during 1956, was joined by the 11th Tactical Missile Squadron. This squadron, stationed at Sembach, made history by being the first Air Force unit to be moved in its entirety, including families, from the United States to Europe.

September 15, 1956, marked the beginning of a new era for the Air Force Missile men of Europe, and the development of the 38th Tactical Missile Wing entered the second stage. On this date a reorganization took place; the 701st Tactical Missile Wing (forefather of the 38TMW) was created, as were the 585th, 586th, and the 587th Tactical Missile Groups.

The missile organization had now become full fledged and was on an equal footing with the fighter aircraft wings. The TM61-C Matador missile had proven its accuracy and destructive power and was recognized as a major weapon in the NATO arsenal of weapons.

Normal facets of construction of new organizations did not apply to the 701st; however military concepts, diversified tactical locations and unusual organization structures demanded experimentation as well as thought and planning.

From its headquarters at Hahn Air Base, the 701st Tactical Missile Wing's planners guided the development of the 585th Tactical Missile Group, the former 1st Tactical Missile Squadron at Bitburg; the 586th, formerly the 69th TMS at Hahn Air Base; and the old 11th Tactical Missile Squadron now organized into the 587th Tactical Missile Group at Sembach. Each group had a supporting element of a Tactical Missile Squadron, a Communications and Guidance Squadron, and a Support Squadron.

On June 18, 1958, the 701st was redesignated the 38th Tactical Missile Wing, and on August 20, 1959, the Wing moved its headquarters from Hahn Air Base to Sembach Air Base, thus creating the first Tactical Missile Base in the United States Air Force.

The move added two more units to the ever expanding missile wing. The 7127th Support Group and the 609th Tactical Hospital stationed at

Sembach had their designations changed to 38th and became part of the strong missile organization.

Changes in weapons systems also affected the 38TMW. On August 7, 1959, the much improved TM-76A Mace Missile was accepted and assigned to the 822nd Tactical Missile Squadron at Sembach. Due to the guidance system of the 76A, the services of the 587th Communications and Guidance Squadron were no longer needed; it was redesignated the 587th Missile Maintenance Squadron.

Now that the missile organization had stabilized, it concentrated on becoming one of the most efficient USAFE elements in the command. Emphasis was placed on all the Wing's activities from operational to support items. Soon it ranked number one in USAFE and stood ever-ready to meet its operational commitments through its missile sites which were scattered throughout Western Germany. During November 1961, the Wing was awarded the Air Force Outstanding Unit award for its meritorious service to the USAFE Command and the United States Air Force.

Eventually the TM61-C Matador missile was replaced by the TM76-A Mace, and even now, the Wing is preparing for the introduction of the more advanced TM76-B which will be sheltered at Bitburg.

As concepts change, organizations change; therefore, on September 28, 1962, the 38th Tactical Missile Wing streamlined its structure and assumed a Dual Deputy posture. During this third phase of the Wing's development, all Tactical Missile Groups were eliminated, most support elements were redesignated, and three new Tactical Missile Squadrons emerged: The 89th, 823rd, and the 887th Tactical Missile Squadrons. The Commander's staff was reduced. A Deputy Commander of Operations, a Deputy Commander of Materiel, and a Combat Support Group Commander now made up the command structure under the Vice Commander and Wing Commander.

The Wing units now number 13 operational and support squadrons. Tactical Missile squadrons stationed at Sembach are the 822nd, 823rd, and the 887th. The 405th and 89th Tactical Missile Squadrons serve at Hahn Air Base and the 71st Tactical Missile Squadron at Bitburg Air Base.

Support elements at Sembach include: 38th Missile Maintenance squadron, 38th Supply squadron, 38th Air Police squadron, 38th Transportation squadron, 38th Civil Engineer squadron, the Headquarters Squadron section and the 38th Tactical Hospital.

Tenant units at Sembach are: 306th Munitions Maintenance squadron, 2134 Communications squadron, 31st Weather squadron, Detachment 20, Field Ordnance team, Detachment 914, Detachment 7015, Office of Special Investigations, USAF Resident Auditor and six small Army aviation units, and the 601st Tactical Control Squadron.

This then is a brief history of one "young" Air Force unit and Sembach Air Base. Today the wing stands ready 24-hours per day as the advance guard to NATO's main line of defense.

NATO

The 38th Tactical Missile Wing is a NATO committed unit. It is an important part of the United States' contribution toward the defense of the free world.

What is NATO?

The North Atlantic Treaty Organization includes a chain of countries stretching from Norway to Turkey that stands guard against a possible hostile attack from the east.

As a member of NATO, we should understand the organization that is dedicated to collective defense.

On April 4, 1949, the North Atlantic Treaty was signed by representatives of the United States, Great Britain, France, Belgium, the Netherlands, Luxembourg, Portugal, Denmark, Norway, Italy, Iceland and Canada. (Turkey and Greece joined the alliance in 1952 and the Federal Republic of Germany joined in 1955).

As military personnel, we should understand the organizational layers of command to which we are committed in NATO.

On the top level is the North Atlantic Council, sometimes called the Council of Ministers. It is composed of foreign ministers of defense and finance of signatory countries. Under them serves the Permanent Council, formerly called the Council of Deputies.

The Permanent Council is in permanent session in Paris and is NATO's focal point. Every NATO action depends on the Council and all NATO matters are linked to it.

On the next level are four "branches". They are the: Defense Production Board, Financial and Economic Board, Planning Board for Ocean Shipping, and the one which we are primarily concerned with, the Military Committee.

The Military Committee is composed of a three nation standing group of the Chiefs of Staff, or their representatives, of Britain, France and the United States. They have been called the "key military unit of the entire North Atlantic edifice." This standing group integrates the plans of the component areas and develops an overall strategic concept and plan. It meets continuously in Washington D.C. Under the Military Committee and Standing Group are: Allied Command, Europe; Allied Commander, Atlantic; Channel Committee and the Canada-U.S. Regional Planning Group.

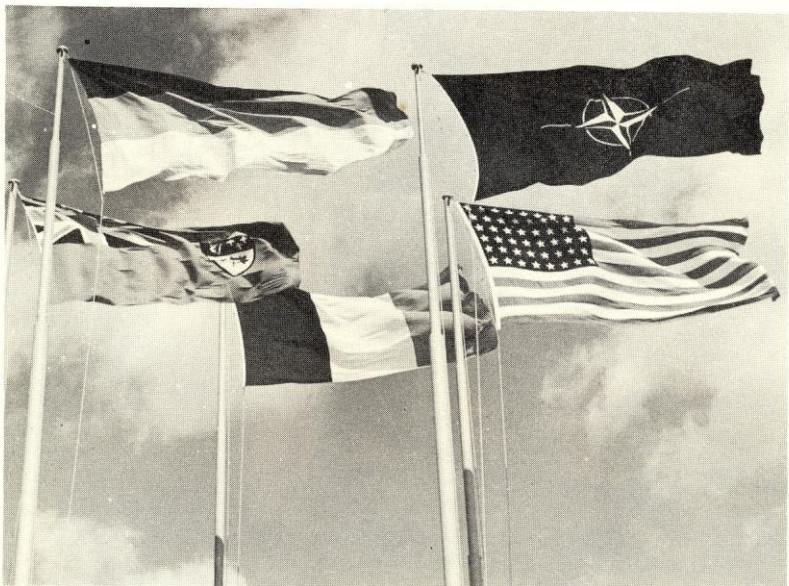
We are primarily interested in the Allied Command, Europe which is commanded by the Supreme Allied Commander, Europe (SACEUR). SACEUR's mission is the air and ground defense of the Europe land area extending from the North Cape to North Africa and from the Atlantic to the eastern border of Turkey, but excludes the United Kingdom, Portugal and Algeria, the defense of which is a national responsibility. This area responsibility includes the sea and air defense of the Mediterranean.

The next higher headquarters for the 38th Tactical Missile Wing is 17th Air Force located at Ramstein Air Base, Germany. USAF's major air command, United States Air Force Europe (USAFE) at Wiesbaden, Germany is next highest headquarters.

Within USAFE are certain NATO designated units, which for illustration purposes are called "X" units, including 17th AF organizations. The Commander-in-Chief of USAFE is also the Commander of the 4th Allied Tactical Air Force (ATAF) which is composed of French, Royal Canadian, German and American (17th AF "X") units. 4th ATAF falls under the operational jurisdiction of Allied Air Forces Central Europe (AIRCENT) whose next higher headquarters is Allied Forces Central Europe.

Visualize 17th Air Force as a vast pipeline of "X" units made-up of all types of aircraft, tactical missiles, men and supporting services.

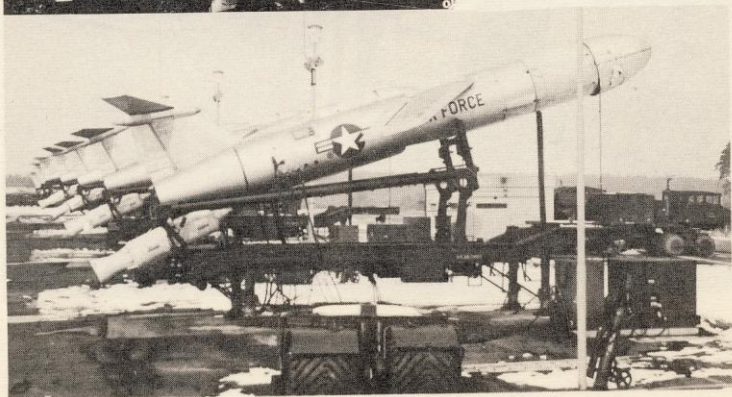
These "X" units, one of which is the 38th Tactical Missile Wing, then fulfill the United States' aerospace commitment, as required, to provide the strength necessary for NATO's defense line.



A FEW OF NATO'S FLAGS FLY HIGH

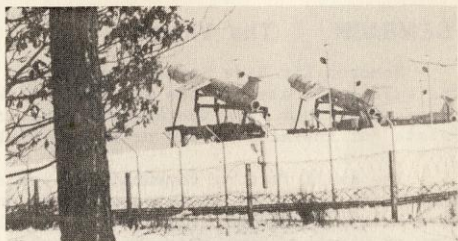


ARSENAL OF DEFENSE





NATO
COMMITTED
38th TMW





A VIEW OF SEMBACH VILLAGE

SEMBACH The Village

Sembach Air Base is named after the nearby small farming community. The base is located in the Landkreis Rockenhausen (county), one of the 13 counties that form the Regierungsbezirk Pfalz (district) in the Land (state) of Rheinland-Pfalz or Rhineland-Palatinate.

The small farming community of Sembach is located approximately nine miles northeast of Kaiserslautern and 70 miles southwest of Frankfurt/Main. The villages of Enkenbach, Alsenborn, Mehlingen, and the town of Otterberg are close to Sembach.

The oldest record mentioning Sembach is found in documents dating to the 11th century.

Sembach's name is derived from the physical features of the local area. The root of the word SEM, originates from Semede which is the word for watergrass. The rushy creeks and ponds in the area furnished the name for the village.

In 1646, the village became the residence of Count Kolb of Wartenberg. Sembach flourished under the count's rule. By the end of the 17th century a mail station was installed in Sembach.

A major federal highway services Sembach. Route N-40 was originally built by Napoleon and connected Paris, France, to the Rhine River city of Mainz.

Later the railroad was constructed and by-passed Sembach completely; the village suffered an economic depression. The community went into relative obscurity, but after construction of the air base, the name of Sembach became known far beyond the boundaries of the local area.

Kaiserslautern is the closest large city to the base. It is thriving and bustling with new modern buildings attesting to Germany's economic growth following World War II.

Kaiserslautern (Kaiser's Lauter River) came into being during the ninth century. The vast forests on both sides of the Lauter River came into the possession of the early Kings of Franconia. Documents dating back to the year 882 mention the founding of a King's court.

In the 12th century, Emperor Frederick I, named "Barbarossa", because of his long reddish beard, enlarged the Court to an Imperial palace. This provided the basis for the development of a small settlement to a town-sized community.

Germany is a picturesque country. Castle ruins of barons and feudal nobility offer mute testimony to Germany's history.

In Kaiserslautern for example, are the remains of the original castle of Emperor Frederick the First, and also two churches, one a 13th century edifice and the other built in the 14th century. Both churches have withstood the ravages of war and time.



WEATHER

The climate at Sembach Air Base compares favorably with the northwest portion of the United States (perhaps a combination of the weather found at Spokane or Tacoma, Washington), or the northeast corner of Pennsylvania in the vicinity of Scranton.

Annual snowfall has been recorded between 8 and 15 inches. Thunderstorms with lightning and hail can be expected during the summer months. The estimated annual average for humidity lies between 90-95 per cent and seldom falls below 80 per cent. There are many days of fog and rain throughout the year.

The average temperature during July and August is 74 degrees. Average temperature during February, usually the coldest month, is 23 degrees. Sembach's elevation is 1,054 feet above sea level.

The People

German people are of a mixed stock. Those from the North are tall, fair and blue eyed, while the Germans of the southern area are darker and stockier built. They are intensely and justly proud of their cultural heritage and of the great contributions their country has made to civilization in the cultural fields.

Folklore is an inherent part of the people, and each part of the country has its own legends and fairy tales, many of which have been immortalized in opera.

The people are noted for their great love of music, dancing, sports and festivals. Outdoor social sports consist of hiking, skiing, boating and camping. The roads are dotted with inns, hotels, and camping sites which cater to cyclists, hikers, and auto travelers. The ski resorts in Bavaria have become internationally famous as have the Black Forest resort towns. The favorite national game is "fussball" (soccer).

Usher in a new wine - - or herald the distribution of "bock" beer, or have an idea for a: Radish, Asparagus, Pretzel, Harvest, Spring, Summer, Winter, you name it festival, and you have a basis for a fest!

Here in the Palatinate, festivals are a tradition. From the world famous "Wurstmarkt" (Sausage Fair) in Bad Duerkheim to Munich's world renown "Oktoberfest", you'll find upward to a half million people attending and having a good time. At every hamlet, village, and town, at some time during the year you'll find a "Volks-" (folk) fest in progress.

The fest in the Palatinate usually features the wine of the area (incidentally, even the people's homes are built according to "wine standards"). The wine cellar has first consideration; then the rest of the house is planned and built.

Besides wine and beer being served at the fests, there are the "Haehnchen vom Grill" (grilled chicken), "Wuerste" and "Broetchen" (sausages of many varieties and hard bread rolls) served. You'll find good natured Germans and Americans, plus people from the entire continent, enjoying liquid refreshment by the liter and singing to the accompaniment of typical "oom-pah-pah" bands.

Aside from the fun fests, most towns and cities have their own opera house and concert hall. Here is the opportunity for the American music lover to join the local community and listen to the world's greatest operas, and to the finest orchestras at a fraction of the cost in cultural centers of the United States.

LEGAL POINTERS:

On 1 July 1963, the NATO Status of Forces Agreement, for years in operation in the great majority of NATO nations, came into effect in the German Federal Republic. The significance of this is that American military personnel become subject to criminal prosecution in the German courts. This has been true of dependents and civilians accompanying the Air Force and continues to be true.

As a result, all of us may be arrested and held by the German authorities if it falls within the type of case over which they have jurisdiction. These are 1) crimes and offenses punishable under German Law and not punishable under American law, in which case the German courts have exclusive jurisdiction and 2) crimes and offenses punishable under German and American law in which case the German Courts have the primary right to exercise jurisdiction (which may be waived to the American courts).

On the other hand, crimes punishable under American Law, not punishable under German law, can be tried only before American courts (for example, absent without leave, drunk on duty, sleeping on post). Further, American courts have the primary right to exercise jurisdiction in cases arising out of the performance of official duty or in an offense solely against the property of the U.S. or other U.S. military members, their dependents or attached civilians.

It is not necessary that one memorize these rules. The best advice to follow is that upon arrest or detention, you should contact the nearest military installation so that prompt steps may be taken to effect release from the German authorities, where release is possible.

Americans may sue or be sued in the German civil courts for such wrongs as breach of contract, damages arising out of automobile accidents, paternity, and the like. Americans may be subpoenaed to appear as witnesses before German courts. As a result, it is highly recommended that you consult with the Legal Office before entering into contract with any foreign national concerning the purchase or sale of automobiles, household appliances, or in cases which may concern the customs laws.

TRAVEL.....car and train

Sembach Air Base is ideally located as a base of operation because of its central location in relation not only to Germany, but to the rest of the continent.

A typical trip by auto from Sembach Air Base, of about two or three hours duration, would be something like this:

Leaving Sembach and driving for some 40 minutes will bring you to Bad Duerkheim, a spa-resort city in the Palatinate. Surrounded by vineyards, the town offers the Spielbank and the world renown Bad Duerkheimer Weinfass (wine barrel) said to hold some 425,000 gallons of wine if it didn't serve as a quaint restaurant.

Next you'd head out along Germany's famous Weinstrasse (Wine Street), a highway approximately 50 miles long which leads through beautiful country known for its viticulture.

The entire area is serviced by a modern network of well kept roads and highways, and a short drive from your quarters offers you scenes of rare beauty and immediate access to the Autobahn.

For the traveller who prefers to do his travelling by public transportation, you'll find that West Germany's train and bus service is comparable to stateside transportation systems. Crack trains offer deluxe service from reservation service to sleeper and diner facilities. Bus service operated by the Deutsche Bundesbahn (German Federal Railways) or the Deutsche Bundespost (German Federal Post Office Department) usually augments rail service and services villages and towns which the railroads bypass. Diesel, steam and electric locomotion is used for train service and modern "yellow" busses of the post office can be seen on almost any highway. Comfort in the trains depends upon the type of ticket purchased (1st or 2nd class).

You'll undoubtedly use local taxi service in town to visit one of the quaint German restaurants in the area. In the United States the custom is to leave a waiter or waitress a tip. In Germany, the tip is included in your bill as a service charge; it usually amounts to 10 per cent of the total. If you appreciate the service given you and want to reward the waiter a "little something extra", round off the amount of your bill to the next 50 pfennig or full Mark total. A tip of 30-50 pfennig, according to the fare, will be adequate.

Living on the ECONOMY

HOUSING: Usually two to five weeks are required to find suitable German economy quarters. The Base Housing Office keeps a current list of available housing in neighboring towns. You can expect to reside on the economy for approximately 8 months for enlisted personnel, and 6 months for officers prior to receiving government family quarters. Although housing on the economy is hard to find and not up to American standards, it is, however, acceptable. More and more units are becoming available due to a boom in construction. Nevertheless, it is difficult to find a unit with more than two bedrooms. In some cases, kitchen and bath facilities are shared with another family.

All economy quarters are inspected by the Base Housing Office. Depending on the size of the living quarters, rents will vary from \$35 to \$125 per month, plus utilities.

LIGHTS: Electricity costs vary from village to village. The average light bill is between four and eight dollars per month.

HEATING: Housing inspectors require that all homes have heating equipment installed that will insure adequate warmth for zero degree weather. Each apartment is usually heated by coal or oil, with heating units in each room. Coal may be purchased on the economy at an approximate cost of \$1.50 per hundred pounds. Oil may be purchased at the base, provided you use your own transportation. Some of the newer homes and apartments now have central heating.

ELECTRICITY: A word about the electricity in Germany. It is 220 volts, 50 cycle current. Transformers can be purchased at the Air Force Exchange (AFEX) to convert the current to 110 volt.

For such appliances as electric clocks, record players, tape recorders, and television sets, a modification must be made. The difference in cycles will cause household items to operate at a slower speed than under the normal 60 cycle current which is used in the United States.

FOOD: Fresh vegetables and fruit may be purchased on the economy, but it is recommended that they be either cooked or soaked in a chlorine solution which is available in the commissary without charge. Milk, butter and ice cream on the economy are not pasteurized to the standards acceptable in the United States, and often milk is not pasteurized at all. You are discouraged from patronizing economy meat markets due to the lack of proper refrigeration given the meats. There are no approved meat markets in this area, except military commissaries.

WATER: In thickly settled communities there is no danger of water being contaminated. In a very small community or in rural areas where the population draws water from wells, or, if there is doubt to the adequacy of the plumbing, water should be boiled before drinking - especially for children under 12.

LAUNDRY: Laundry facilities are poor. Sometimes there is a large tub for water under which you build a fire. However, German laundries are available in most villages where you can obtain service for washing and drying. Automatic washers are not satisfactory, conventional washers can be used and are recommended, but usually require an extra length of hose for connection. Drying space is inadequate; a foldrack is most useful. Automatic dryers are rather expensive to operate but are very useful.

HOT WATER: Hot running water is not always available; small instantaneous gas heaters are the chief means of heating the water and usually these heaters are only in the bathroom.

STORAGE: German houses do not have adequate closet space. Portable closets and door hangers are needed.

REFRIGERATORS: These are seldom furnished. German refrigerators are usually very small. If available, they may be checked out of Housing Supply.

HOUSEHOLD ITEMS: Linens, dishes, silver, cutlery, pots and pans are not usually furnished, but may be purchased locally.

BEDDING: Sheets and blankets are seldom furnished. German beds are very large and require "king size" double sheets. Flannel sheets or electric blankets will add greatly to your comfort.

BABY ITEMS: Cribs and other baby furniture are seldom furnished.

WHAT TO BRING

APPLIANCES: Electric iron, radio, TV, toaster, fryer, skillet roaster, sewing machine, mixer, vacuum cleaner and washer and dryer are needed for Economy houses. Transformers are necessary to use with stateside manufactured items and are available at APEX. A deep freeze is a useful item for German economy living.

KITCHEN WARE: Dishes, utensils, cutlery, heavy plastic dishes, sauce pans, pots, coffee pots, mixing bowls, baking pan, everyday silver and those items and gadgets that are used in the kitchen will also be needed. There is a variety of these items for sale on the economy, but they are expensive.

LINENS: Sheets, pillow cases, towels, face cloths, dish towels, bed spreads, bath sets, table linen, blankets, and baby blankets, are also required for economy housing.

BABY EQUIPMENT: Bring the baby's crib, high chair, bathinette, carriage, stroller and vaporizer; none are furnished.

MISCELLANEOUS ITEMS: Bring along ironing board, clothes pins, extra lenses and/or prescription for extra glasses, alarm clock (not electric), camping equipment, air mattresses, sleeping bags. Bring along the toys for the tots.

CLOTHING: For everyone: suits, skirts and sweaters are good the year round. Cotton and wool dresses, with matching jackets or sweaters are necessary. You will have use occasionally for shorts and bathing suits, especially if you plan to visit the southern European resort areas. Bring slacks as they are indispensable when one needs to walk or wait for the bus in cold weather.

Include some dress clothes, as the officers' and NCO clubs are very active and sponsor many social functions. Wives will find that several cocktail dresses are appropriate especially during the holiday season. A raincoat for each member of the family is a definite "must".

If you have a sewing machine you can certainly use it here. Although the base exchange has a pattern catalogue, it is not always up to date, and since patterns are ordered from New York, they sometimes take up to three weeks to arrive. A subscription to one or two pattern catalogues is a good idea.

Materials are available at the BX or on the German market. English wool and some Italian silks and brocades are less expensive than in the U.S., but nylon material is rare. There are seamstresses in the area whose rates are reasonable.

You may purchase clothes on the German market, many women do, but getting a good fit is difficult, especially if you wear less than a size 14. With the exception of hats, which come in all price ranges, clothing on the German economy is quite expensive. The selection of ready-to-wear for both women and children through the exchange system is limited, but not expensive. However, some of the BX's at other nearby bases offer more of a variety.

SHOES: The BX has limited shoe styles to fit only the ordinary foot, so if you require an unusual shoe size or like variety or "high fashion" in your footwear, bring plenty of shoes with you, or make mail order arrangements at home. Low heeled walking shoes are a must for sight seeing.

COSMETICS: Cosmetics, lingerie, hose, etc, are available. However, if you prefer certain brands it is best to bring a good supply of these items, and also that you arrange for mail ordering from the States. Notions are available at the BX, and on the German market.

Sears and Roebuck, as well as Montgomery Ward catalogues are available in the BX and many people order most of their needs in this manner. It may take from three to six weeks to receive an order.

MEASUREMENTS: The German people use a different system than do the Americans. And if you plan to buy on the economy, it is necessary to know the system they use.

A German pound is 500 grams. Two German pounds - 1000 grams - make a kilo. The meter (100 centimeters) is used for linear measurement: One inch equals $2\frac{1}{2}$ centimeters. The liter is the unit of liquid measurement and is equal to 1.05 U.S. quarts. The measurement of distance is calculated in kilometers: Eight kilometers, or KM's equal five miles; or one kilometer equals $\frac{5}{8}$ th's of a mile.

GERMAN CLOTHING SIZES: MEN

Suits - Coats - Sweaters

U.S	34	36	38	40	42	44	46	48
German	44	46	48	50	52	54	56	58

Shirts

U.S.	14	14½	15	15½	16	16½	17	17½
German	36	37	38	39	41	42	43	44

Underwear

U.S.	34	36	38	40	42	44
German	5	6	7	8	9	10

Shoes

U.S.	5	6	7	8	9
German	38-39	39-40	40-41	41-42	42-43

Hats

U.S.	6-5/8	6-3/4	6-7/8	7	7-1/8	7¼	7-3/8
German	53	54	55	56	57	58	59

WOMENS CLOTHING:**Blouses and Sweaters**

U.S.	32	34	36	38	40	42	44
German	38	40	42	44	46	48	50

Dresses - Coats - Suits

U.S.	7	9	11	13	15	17
German	34	36	38	40	42	44

Shoes

U.S.	3	4	5	6	7
German	36-37	37-38	38-39	39-40	40-41

Stockings and Gloves

Same as in the U.S.

CHILDRENS CLOTHING:

U.S.	2	4	6	8	10
German	40-45	50-55	60-65	70-75	80-85

Shoes

U.S.	2½	3	3½	4	4½	5	5½	6
German	19-----		20-----		21-----		22-----	

CUSTOMS: You are allowed to bring with you any objects intended for personal use, including up to 400 cigarettes.

CURRENCY: You may bring to Germany any amount of U.S. dollars or any other currency, traveller's checks and letters of credit. You are also allowed to have any amount of German marks with you.

EXCHANGE OF MONEY: The German monetary unit is the Deutsche Mark. One D-mark equals 100 pfenning. There are coins of 1,2,5,10 and 50 pfenning denominations. Silver coins are in amounts of 1,2, and 5 Deutsche Mark pieces. There are bills of 5,10,20,50 and 100 D-mark. The American dollar is equivalent to approximately four Deutsche

marks. Dollar bills or travellers checks can be exchanged for D-marks at the official exchange stations, American Express, the main train stations, and the major banks and hotels. Fashionable shops in the large cities will also accept your travellers checks.

SHOPPING: The German "Drogerie" is not the same as an American drug-store. A Drogerie will sell only toilet articles and similar things and medicine which can be purchased without a prescription.

TRANSPORTATION: The majority of personnel assigned to Sembach Air Base arrive from the United States via air at Rhine Main Air Base. A very small percentage, arrive via surface transportation (MSTS) at the Bremerhaven POE. For those who arrive by air, there is daily bus service including Saturday, Sundays, and Holidays from the Rhine Main Air Base Passenger Hotel to Sembach Air Base. The bus departs the hotel at 1300 hours and arrives at Sembach at approximately 1500 hours.

Personnel debarking at the Bremerhaven POE are placed aboard a military train at dockside and proceed to Frankfurt railroad station where they change trains for Kaiserslautern. Upon arrival at Kaiserslautern, they report to the U.S. Army RTO office located in the entrance of the railroad station. There they contact the Sembach Motor Pool Dispatcher, (Tel 06320-7-7255) to arrange for transportation to the base.

ABOUT THE BASE

Although Sembach may be considered small by most military standards, it nevertheless boasts of practically all the facilities found on larger bases. Troop housing is very adequate with modern permanent type dormitories, offering comfortable and spacious rooms.

FAMILY HOUSING

Sembach Air Base's family housing area consists of 28 three-story apartment buildings each consisting of 18 units. Each building is divided into two, three and four bedroom apartments. Although linen, kitchen utensils, and kitchen ware, china, crystal and tableware must be provided by the tenants, the units are considered to be completely furnished and, include the following items:

KITCHEN

Refrigerator
Oven
Electric range

DINING ROOM

Drop leaf table
Six chairs
China cabinet
Floor rug

LIVING ROOM

Davenport
Two easy chairs
Livingroom rug
Desk
Coffee Table
Two end tables

MASTER BEDROOM

Double bed
Two night stands
Vanity and bench
Two Bedroom lamps
Throw rugs



THIS IS HOME FOR SEMBACH'S FAMILIES LIVING IN THE FAMILY HOUSING AREA.



TYPICAL OF THE FURNISHED QUARTERS FOUND ON SEMBACH AIR BASE. YOUR RADIO, TV, A FEW PICTURES HUNG ON THE WALL AND YOU HAVE A HOME.

EACH ADDITIONAL BEDROOM

Single bed
Night stand and lamp
Throw rugs
(Baby cribs are available)

The maid's room in the basement of the building is furnished with a single bed, night stand and lamp and a clothing cabinet. There are six washing machines and dryers per building.

Sembach's families make use of two family housing areas, one at the Vogelweh Army housing area which is temporary until you move to Sembach Air Base. Families may elect to remain there permanently if they desire. The Vogelweh housing area is located 12 miles from Sembach while the base's family quarters area is adjacent to the base proper.

Assignment of quarters is made according to the date the sponsor (E-4 and above) departed the United States. The usual procedure is to move into housing at Vogelweh as soon as it becomes available and then later move to Sembach. Effective 1 September, 1963, Chief Master Sergeants will have a very limited waiting period. After arrival at Sembach, they will be placed at the top of the housing list and be given the first quarters that become available.

The electric current used at both housing sites is the same as the economy, 220 volt and 50 cycle.

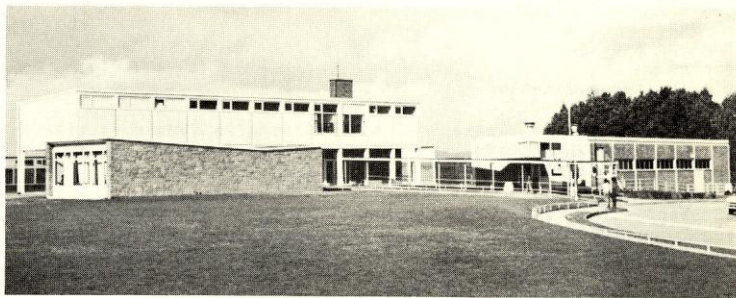
The quarters at Vogelweh consist of two and three bedroom apartments and contain the same basic furniture as the Sembach apartments.

While residing at Vogelweh, your children will attend one of the three modern schools located there. There is an elementary, junior high, and high school. All high school students attend the Vogelweh High School.

There is no cafeteria service available at the Sembach School. Economy children must carry their lunch while housing children must eat at home. A child entering the first grade must be six years of age by December 31st of the school year.

Because of the Sembach school's accessibility to the family housing area, bus service is not provided. For children living on the economy bus transportation is available and parents should insure that school bus service is scheduled for an area prior to renting a home.

Bus service is available from Sembach to the Vogelweh High School, a distance of approximately 15 miles. The high school operates a cafeteria which is available to students.



SEMBACH'S SCHOOL IS A MODERN AIRY BUILDING

Students registering in Kindergarten or the first grade must have a birth certificate or other legal proof of age. All other students must have their latest report card and one parent must accompany the student at the time of registration.

TEMPORARY ACCOMODATIONS: On Base there are no transient quarters or guest house accomodations available for families. Temporary accomodations available in the Kaiserslautern area are limited since this is not an especially popular tourist area at any season of the year. There are approximately 40 Army approved civilian hotels in the Kaiserslautern area. No known restrictions are placed on length of stay. Depending upon type of accomodations, such as private bath etc., the prices will range from \$1.50 to approximately \$9.00 a day per person.

Although public transportation is available, a private vehicle is almost a necessity in order that facilities such as medical, commissary, BX, etc., can be reached.

RECREATION AND ENTERTAINMENT

SEMBACH OFFICERS' CLUB: The Sembach Officers' Club is a very attractive and comfortably furnished club. It consists of a dining room, bar, lounge and two small rooms for private parties. The club maintains an extensive activity program with floor shows and orchestras on weekends. Dues are \$6.00 per month.

SEMBACH TOP HAT NCO AND AIRMEN'S CLUB: The Non-Commissioned Officers' Club and Airmen's Club share the same building; the NCO's club is on the ground floor and the Airmen's club is upstairs. Dues are \$1.00 per month, the club is a very active and a popular spot for all NCO's and Airmen.

SEMBACH ROD AND GUN CLUB: An active, rapidly growing, Rod and Gun Club exists at Sembach. The physical facilities are among the finest in Europe. The general meeting room will accomodate from 250 to 300 people. The adjoining sales store handles a variety of fishing and hunting equipment with emphasis on quality at low prices.

Since Sembach is located in the middle of German hunting grounds; good sport is available in the immediate vicinity of the club. Under lease is a lake which is periodically stocked with rainbow trout. Other club facilities include: skeet, trap and rifle ranges and an indoor pistol range. Membership fee is \$5.00 every six months.

CLUBS IN NEARBY VICINITY: In addition to those clubs already mentioned, a person can hire a taxi, rent a car, or drive his own car to Ramstein Air Base in less than an hour.

COMMUNITY CENTER: Sembach has one of the most complete Community Centers in Germany which offers a wide variety of recreational activities. Weekly programs include films, bingo, dance lessons and duplicate bridge. Featured during the monthly programs are German-American dances, casino nights, birthday parties, fashion shows, floor shows, jazz performances, sports nights, and many other entertainment features. Various clubs meet weekly at the Center, which are always interested in obtaining new members. Included in these are the Chess Club, the Theater Workshop, the Square Dance Club, the Stamp Collector's Club, the Glee Club and the Orchestra. The Center is also equipped with extensive recreational materials for free time activities, such as: pool, ping pong, shuffleboard, card games, magazines and musical instruments of all varieties. In the basement of the Center are the base Crafts Hobby Shop and Photo Shop, open to all personnel interested. Complete photo processing equipment is available as well as equipment for ceramic work, leather work, copper enamelling, mosaics, jewelry making and related crafts.

OFFICERS' WIVES' CLUB: The OWC holds a luncheon and business meeting monthly from September through May. A Hail and Farewell brunch is also held monthly. Dues are one dollar per month. Many special activities are afforded club members. If your husband is a member of the Officers' Club, you are cordially invited to become a member of the OWC.



EXTERIOR VIEW OF OFFICERS' OPEN MESS



EXTERIOR VIEW OF NCO OPEN MESS

NCO WIVES CLUB: There are many special activities offered to the members of the NCO wives' club. A coffee and business meeting, luncheon and social meeting, and a dinner-dance are held monthly for paid up members. Dues are one dollar per month and free nursery facilities are available for members on club days.

THEATERS: The base theater seats 500 people and is equipped with 35MM and Cinemascope projectors. There are two performances each evening with matinee performances on Saturdays, Sundays, and Holidays at 1330 hours. Evening performances are at 1830 and 2030, unless otherwise advertised. Monthly calendars can be obtained at the theater, BLDG 143.

The housing area includes a family theater seating 255 people with one performance nightly at 1900 hours. A special "Kiddie-Matinee" is featured each Saturday at 1000 and 1300 hours.

THE LIBRARY: The library contains over 16,000 volumes and a wide variety of magazines and newspapers. Its hours of operation are: 1000 to 1200 Monday through Friday; 1000 to 1900 on Saturdays, and holidays, 12 noon to 2100 on Sundays. A music room is also located in the library which contains a stereo record player and many albums of classical records. The hours of operation are the same as the library.

BASE AND INTRAMURAL SPORTS: A varied and energetic athletic program is carried on through the year. Base level athletic teams include: football, golf, soccer, track, and judo. Inter-squadron sports also assume a major role in the annual sports program. These include: volleyball, basketball, handball, squash, badminton, golf, tennis, judo.

BASE GYMNASIUM : The gym offers a variety of athletic facilities: a large basketball court, squash and handball courts, exercise room complete with judo facilities, steam room, masseur, and a 12 lane bowling center. Equipment is readily available at the gym supply room for use in these sports.

AUTOMOTIVE: A 3,200 sq foot auto hobby shop is located in building T-146. Hand and power tools and equipment are available, in addition to a complete welding outfit. Eight stalls and a grease pit are provided for both minor and major repairs. The shop is staffed by competent personnel who are capable of advising and instructing in all types of repairs and modifications.

WOODWORKING: A 1,600 sq foot woodworking shop is located in building 124. Hand and power tools are available. Experienced personnel in charge instruct in the making of models, furniture, toys, novelties, inlays, etc.

EDUCATION: The United States Air Force in Europe makes every effort to have its members and their families participate in off-duty and on-duty adult education programs. The University of Maryland has a European branch which offers qualified participants college courses ranging from the entry level through degrees. Various testing and accreditation services, as well as information on military training and civilian schools, are available at the Education center. In addition, the center handles all USAFI and ECI enrollments.

BASE EXCHANGE FACILITIES

Two types of exchange facilities are available to authorized users in the vicinity of Sembach Air Base. The Air Force Exchange has facilities at all Air Force installations, while the European Exchange Service has facilities at all US Army installations.

At Sembach, AFEX operates a small exchange and can furnish service for its customers with almost any desired item from toilet articles and notions to clothing. At Toyland many toys are available for children. Certain items are limited due to storage space and display room. Anything not available can be ordered through the department heads.

AFEX also offers customers a barber shop, service for laundry, dry cleaning, film-processing, and two snack bars. A Class VI store for the purchase of beverages, wines and liquors is also in operation at this base.

The Vogelweh (Army European Exchange Service) and Ramstein Air Base's shopping centers (AFEX) are available to you and supplement the base exchange.

SNACK BARS: The main AFEX snack bar at Sembach is located in the Community Center building. There is a small snack bar in the housing area and one in base operations.

DELICATESSEN: AFEX operates a delicatessen at Sembach that is located in the base exchange building. It is open evenings and Sundays in addition to normal operating hours.

BARBER SHOP: There are four barber shops located on Base. One is in the Base Exchange, one in the BOQ, one in Base operations and one in the NCO Club.

LAUNDRY: Laundry, dry-cleaning, tailoring, film processing, watch, shoe, and radio repair facilities are located in building 222, as are self service washing and dry cleaning machines.

COMMISSARY: The Commissary is located in building 98, adjacent to the housing area. It is stocked with American food and a few foreign specialties. Personal checks for the amount of the purchase and government payroll checks are accepted. The Commissary publishes a news bulletin which gives tips on food for good eating at low cost. The Commissary is closed on all German holidays and open on all American holidays except Thanksgiving and Christmas



THE BASE COMMISSARY IS ADJACENT TO THE HOUSING AREA

AUTOMOBILES

The desire for one's own stateside automobile is a personal matter. Roads and driving conditions in Germany are not the same as in the United States. American cars are not designed for high center crown and cobblestone roads. The American car offers more comfort and conveniences, but a higher rate of wear can be expected in Europe. It is recommended that you have your car in top operating condition before shipping it overseas.

REGISTRATION AND OPERATION: Personnel desiring to operate a private vehicle in this command, and who possess a valid license from a state in the U.S., are required to pass a driver's test consisting of International road signs and general driver's information. The tests are administered by the base drivers school.

PICK-UP POINT: The only pick-up point for overseas arrivals of automobiles is the entry port of Bremerhaven. The port is about 400 miles from Sembach and a three day trip is required to obtain your car and return. All facilities are available at the port for immediate insurance, servicing and necessary repairs. Average transit time from the United States is 30 - 45 days.

INSURANCE: Prior to pick-up of an automobile, the owner must present a USAREUR driver's license, proof of ownership and sufficient insurance coverage for Germany. American insurance company rates are based upon rank, and for the minimum requirement of \$25,000/\$25,000 property damage and liability, the rates are as high as \$90 per year, for basic airmen, to as low as \$45 per year for officers. Or, you may obtain your policy in the states before departure.

European insurance firms also have insurance to offer. As a general rule their rates are computed by the horsepower of the car without regard for the man's rank and often are somewhat cheaper. One company with an office in Kaiserslautern offers the following: Total liability coverage per year for under 35hp is approximately \$44 and for over 35hp - \$50.

COLLISION COVERAGE: Collision coverage is extremely expensive and the following is offered as an example: \$100 deductible on a 1960 automobile costs more than \$100.

LICENSE-REGISTRATION: American owned vehicles are licensed and registered with USAREUR. The car must pass a safety test for brakes, lights, tires, front-end, steering, horn, glass, and muffler and tail pipe. Proof of ownership and insurance must also be presented. All autos must be equipped with rear and side view mirrors mechanical turn signals and a spare tire.

GAS AND OIL: Gasoline is rationed in Germany. An American military member is authorized up to 100 gallons of gasoline per month. Gasoline is rationed on the basis of horsepower of the automobile. If the auto is over 60 hp the full ration is authorized. Gasoline is purchased before delivery from AFEX outlets by means of coupon books; no monetary exchange is made at the time of sale; instead, one surrenders coupons for the gas.

Coupon purchases may be made at the Sembach Base Exchange, at the Vogelweh shopping center, or at the Ramstein Air Base Exchange. Quarter-master gasoline costs a little over 12 cents a gallon. If an additional gas ration is needed, you may submit a justified request to the Base Air Police.

AFEX also sells gas stamps which can be used at civilian ESSO stations in Germany. Personnel may either obtain their monthly allotment of gas in QM coupons, ESSO coupons or a combination of both. ESSO costs about .28¢ a gal. ESSO coupons for use in France are also available.

SPEED LIMITS: Maximum mph speed for autos is: Cities or communities 40-50 KM (approximately 25-28 mph); express highways (Autobahns) and other roads: none, unless posted.

REPAIR FACILITIES: The AFEX lubritorium provides lubrication, oil change and battery service. In Vogelweh the EES operates a 100 bay repair shop for all types of repairs and body work. Prices for parts and repairs are comparative to U.S. prices. German garages and repair shops are willing to attempt to repair American cars; however, they lack experienced personnel and parts. Automobile owners are encouraged to bring minor parts with them, i.e. points, fan belts, wiper blades, etc.

THINGS YOU SHOULD KNOW

HOUSEHOLD GOODS AND HOLD BAGGAGE: As soon as possible after arrival at Sembach, personnel who have shipped household goods or hold baggage at government expense should personally call at the Commercial Transportation Office. There, you will fill out a locator card, present 7 copies of your orders, and obtain any pertinent information on the arrival of your property.

As a matter of general information, hold baggage normally takes from four to six weeks and household goods from eight to ten weeks to arrive from the U.S. Household goods and hold baggage may be held in commercial storage at government expense up to 90 days after arrival, providing no in-transit storage was used en-route.

WEIGHT ALLOWANCES:

Accompanied Baggage - Air, 65 lbs per person
Surface - Two pieces per adult and dependent, one piece for children under age 12.

Unaccompanied Baggage - Air and Surface
Gen and Col - 800 lbs
LtCol, Maj, Capt, Lt - 600 lbs
NCO's and A1C (over 4) - 400 lbs
Lower four grades - 200 lbs

Dependents, regardless of sponsor's rank, are authorized 350 pounds for each child over 12, and 175 pounds for those under 12. Dependents goods can be combined as a family unit or with household goods.

Household goods - All family units, regardless of rank - 2000 lbs.

Accompanied Baggage: Suitcases, handbags, etc, accompanying a passenger on MATS aircraft or MSTs cabin.

Unaccompanied baggage should be shipped in footlockers, trunks, boxes no larger than footlocker size. Whether you come concurrently or the sponsor departs first, part of your unaccompanied baggage should contain items you'll need immediately. Bring anything that you must have and cannot afford to duplicate.

Household Goods: Before sending household goods review the information pertinent to the type of housing, and send the household items you will need for your accommodations. Remember there is a 2,000 pound weight limit.

As soon as you are sure that your dependents will join you, it is recommended that your wife mail parcel post packages containing essential items of clothing and household equipment you will need immediately upon her arrival. Packages can be 100 inches in length and girth combined, (about the size of a footlocker). Weight limit is 70 pounds.

It is cheaper to send one 70 pound package than two 35 pound packages. Shipment of parcel post packages is specially advisable for A2C and A3C who cannot ship hold baggage for dependents.

PASSPORT RENEWALS: Passports for dependents of US military personnel must be renewed three years from date of issue. After five years from the date of issue, a passport is no longer valid. An application for a new passport should be submitted well in advance of this deadline if the sponsor will be in the theatre for more than four years. The Base Personal Affairs Office will assist you in these matters.

ID AND RATION CARDS: You will apply for these items through your unit orderly room. All dependents over ten years of age are required to possess a dependent identification card. Ration cards for coffee, liquor, and cigarettes will be issued to eligible adults.

FAMILY SERVICES: Newly arrived personnel are well advised to become familiar with the many services offered by the Family Services Program. It is staffed by volunteers who are wives of officers, NCO's and Airmen, and is designed to eliminate much of the strain of moving in and setting up house at Sembach. The program also provides solutions to many day-to-day problems which confront the Air Force family, and gives temporary assistance in case of emergencies.

Incoming and outgoing personnel can check out chinaware, silverware, pots and pans, and other household and kitchen items for a period of six weeks or until their household goods arrive.

The Emergency Committee is on-call 24 hours a day, and is equipped to handle such emergencies as: baby sitting when the wife is in the hospital, grocery shopping, care of children, and any related emergency which might arise. The Family Services Center operates to serve you.

EMERGENCY ASSISTANCE: Red Cross facilities are available at Sembach. The Red Cross representative is always ready to aid and counsel you on such matters as: emergency leave, financial aid, and any personal problems you may have.

The Air Force Aid Society is the official emergency financial assistance organization for the United States Air Force. Assistance is rendered in non-interest bearing loans and grants in cases of emergency. The Air Force Aid Society and the American Red Cross jointly have agreed on policies and procedures that form a basis for mutual cooperation in providing financial assistance to Air Force Personnel and their Dependents.

MEDICAL AND DENTAL: The 38th Tactical Hospital at Sembach offers general outpatient care for all dependents. This service is given in a modern Air Force clinic which has complete pharmacy, X-ray, laboratory and dental facilities.

Only male military patients are hospitalized, as the nursing staff is not large enough to furnish 24-hour coverage for dependents. Excellent inpatient care is furnished dependents at Lansthul Army Hospital, a distance of 23 miles from Sembach, and in the USAF Hospital at Wiesbaden, approximately 55 miles from Sembach.

Although the medical facilities in this area will compare very favorably with like facilities in the US, it is advisable that all known needs for medical, dental and optical service be obtained before departure.



THE HOSPITAL IS CENTRALLY LOCATED IN THE ADMINISTRATIVE AREA

WEAPONS REGISTRATION: You must register any weapons which you own. Information on procedures may be obtained from the Air Police or the Unit orderly room.

VETERINARY CLINIC: In addition to its normal duties, this clinic provides service for pets. Annual rabies shots for pets are required; the price is set to cover the cost of the vaccine.

MAIDS: Maids are available for hire on daily or monthly basis. Daily rates are about \$3.00 per day while a full time maid earns about \$30 to \$50 dollars per month. Maids must be registered with the base; a pass must be obtained; sickness insurance secured and a physical examination must be completed at the hospital. The Pass and Screening Office can guide you through the various steps required, and also provide information on where to obtain a maid.

BANKING FACILITIES: American Express has a branch office on the base and offers many services. Among them are savings and checking accounts, tour service, hotel reservations, currency exchange, small loans, travellers checks and money orders. Checks may be written in either Deutsche Marks, or Dollars.

MONETARY EXCHANGE: The following exchange data is listed for your information and is subject to fluctuation. Per dollar you receive 3.98 German Deutsche Marks; 4.84 New French Franks; 6.71 Danish Krone; 628 Italian Lira; 43.30 Luxembourg Franc; a British pound however is worth \$2.88.

TELEPHONE AND TELEGRAPH: This office is located in the Community Center lobby and is operated by the Deutsch Post. It handles installation of civilian telephones, sends telegrams and places long distance calls.

TELEVISION: Armed Forces Television (AFTV) Channel 26, operated by Ramstein Air Base can be received at Sembach Air Base. The station offers both filmed and live shows. Your present set will operate in the Sembach Housing Area without conversion. Government quarters have a central UHF antenna which receives and converts UHF frequencies to VHF, thereby allowing reception on Channel #4. Economy personnel, however, will require the addition of a converter. They are available in the AFEX for an approximate cost of \$20.00.

POST OFFICE: A United States Post Office is operated at Sembach by Det. 500, 2nd Air Postal Squadron. All U.S. mail facilities are available here except Money Orders. Transit time for AIRMAIL to the United States is between 15 to 24 hours. Listed below is the correct mailing address for personnel assigned to Sembach:

A1C John Doe AF13454211
Box Number
(Your unit of assignment)
APO 130, New York, N.Y.



AIRMEN DORMITORIES ARE MODERN AND CENTRALLY LOCATED

RELIGION: Religious needs of Sembach personnel are filled by a modern chapel, a capable staff and three military chaplains. In addition to the Sunday services, the chapel has an extensive program for Catholic and Protestant personnel.

PROTESTANT

SUNDAY WORSHIP SERVICES: 1000, 1100 and 1930 hrs.

SUNDAY SCHOOL: Meets from 0930-1030 for all persons age three and up.

CHOIR: Rehearsals weekly and provides music for the services. The junior choir meets on Sundays and the senior on Thursdays.

PROTESTANT MEN OF THE CHAPEL: Is an organization of laymen that meets each third Friday noon.

PROTESTANT WOMEN OF THE CHAPEL: Meet each second Thursday.

PROTESTANT YOUTH OF THE CHAPEL: Meet each Sunday evening.

CHAPEL STAFF AIDES: An organization of laywomen Protestant and Catholic, serve as hostesses on weekdays during chapel office hours.

CATHOLIC

SUNDAY MASS: 0900 and 1205 hours.

DAILY MASS AT: 1205

SATURDAY MASS AT: 0900

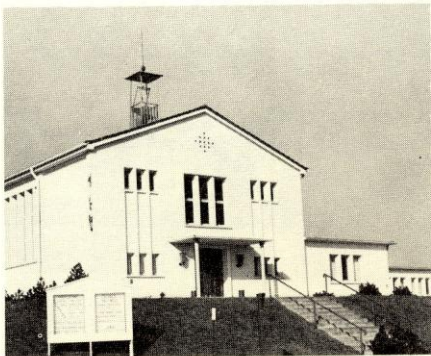
Religious instruction is held for all grades through High School. Kindergarten through 8th grade classes meet on Mondays while the high school classes meet on Sunday.

MARY QUEEN OF PEACE SODALITY: Is a women's organization and holds monthly meetings on Fridays. The Sodality is affiliated with the Military Council of Catholic Women.

HOLY NAME SOCIETY: A men's organization holds their meetings monthly. The society sponsors the Explorer Scouts of Sembach, and is affiliated with the Military Council of Catholic Men.

THE MARIANETTS: An organization for Catholic girls of grade school age at Sembach.

KNIGHTS OF ALTAR: Is the organization for boys and young men who would increase their proficiency as Mass Servers. The Knights are affiliated with the National Office in Notre Dame, Indiana.



BASE CHAPEL

**BASE ADMINISTRATIVE
AREA BUILDING NUMBER INDEX**

BLDG		BLDG	
98 ...	COMMISSARY	147 ...	BASE EXCHANGE
105 ...	BASE GYM	149 ...	BASE POST OFFICE
109 ...	OFFICERS CLUB	151 ...	BASE HOSPITAL
110 ...	BOQ	152 ...	BASE SUPPLY - MACHINE ACCOUNTING & PUBLICATIONS
111 ...	38TH TAC MSL WG HQ & 38TH COMBAT SUP GP HQ	154 ...	VETERNARIAN
112 ...	CONSOLIDATED PERSONNEL	157 ...	TOYLAND & EDUCATION CTR
113 ...	BASE COMMUNICATIONS	201 ...	COMMUNITY CENTER & SNACK BAR
114 ...	JR. HIGH SCHOOL	203 ...	38TH TAC HOSP BILLETS
115 ...	BASE LIBRARY & JR. HIGH SCHOOL	206 ...	BEMO & DRIVERS SCHOOL
117 ...	GATE #2	207 ...	WEIGH STATION (COAL)
118 ...	BASE CAHPEL	208 ...	HEATING PLANT
120 ...	FIRE STATION	210 ...	38TH AIR POLICE SQ
124 ...	WOOD HOBBY SHOP & LUBRITORIUM	211 ...	38TH HQ SQ SEC & CENTRALIZED LINEN EXCHANGE
125 ...	STORAGE, OIL, GREASE	212 ...	38TH MISSILE MAINT SQ
126 ...	WEEKLY INSPECTION	213 ...	DINING HALL #1
129 ...	BASE PHOTO LAB	214 ...	306TH MUNITIONS MAINT SQ & 38TH SUPPLY SQ
130 ...	SSB (H/F) & MARS STATIONS	216 ...	NCO - BOQ & CSU BILLETS HOUSING ADMINISTRATION
131 ...	MOTOR POOL SERVICE STATION	217 ...	38TH CIVIL ENG SQ & 601ST TAC CON SQ
132 ...	BASE MOTOR POOL (MAINT)	218	DINING HALL #2
135 ...	MOTOR POOL (MAINT)	219 ...	2134TH COMMUNICATIONS SQ
139 ...	PAINT STORAGE (BASE SUPPLY)	220 ...	NCO & AIRMAN CLUB
140 ...	PAINT STORAGE (BASE SUPPLY)	221 ...	CLOTHING SALES STORE
141 ...	BASE SUPPLY - HOUSING SUPPLY PACKING & CRATING - COMMERCIAL TRANSPORTATION - MATERIEL FAC.	222 ...	BEVERAGE SHOP - PICKUP PT & CLASS VI STORE - DRY CLEANERS
143 ...	BASE PROCUREMENT - FINANCE - AMERICAN EXPRESS BANKING	227 ...	QUARTERMASTER GAS STATION
144 ...	BASE COAL STORAGE	230 ...	GATE #1
145 ...	BASE THEATER & RESIDENT AUDITOR & OSI	231 ...	CIVILIAN PERSONNEL
146 ...	BASE AUTO HOBBY SHOP	251 ...	ROD & GUN CLUB

